



2022 ANNUAL REPORT

*Photo: Oak Grove Lake Park
Permission by Photographer Angela Andrieux
www.angelaandrieux.com*

1435 CROSSWAYS BLVD,
SUITE 303
CHESAPEAKE, VA 23320

OFFICE: 757.397.5424
FAX: 757.397.7948
WWW.SEVACF.ORG

SEVACF BOARD LISTING

Amy Folkes,
President

Timothy S. Culpepper,
*Immediate Past President
Committee Chair*

Stephen Korving,
*Vice President
Committee Chair*

Michelle Butler,
Secretary

Ashton Lewis, Jr.,
Treasurer

Charles G. Hackworth, Sr.
Committee Chair

Thomas E. Wood
Committee Chair

Carolyn Bernard,
Sub-Committee Chair

Ross Cherry
Doris Cobb
Carl Hardee
Scott Matheson
Emily Robbins
Clay Robertson

SEVACF STAFF LISTING

Richard E. H. Wentz,
Chief Executive Officer

Janice Coppa,
*Director of Finance
and Administration*

Carrie Reid,
Administrative Coordinator

Dear Friends,

From its creation in 1965 as the Portsmouth Community Trust, the Southeast Virginia Community Foundation successfully completed its 57th year in 2022 by fulfilling our mission of Connecting Donors to Causes that Matter. In celebrating the success, we are very pleased to present the Annual Report for 2022.

The Foundation added 2 new Donor Advised Funds (DAF) totaling \$22k. Contributions to existing DAF's added an additional \$158k. The Foundation also established 2 new Scholarship Funds. We are pleased to report a total of over \$447k in contributions in 2022. However, as with all organizations, we experienced a decline in net losses on investments. The value of our net assets dropped to just under \$17 million. That said, we have had a net positive return on investments through the first four months of 2023.

Though the foundation experienced declining assets, we continued to support the community by awarding 131 grants and 41 scholarships totaling \$604k.

Additionally, the board welcomed new members, Doris Cobb, development director with Communities in Schools, and Clay Robertson, producer at Brown and Brown.

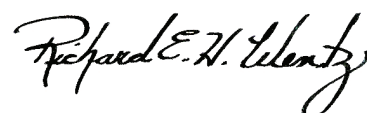
This year can be considered a success for the Foundation, and the coming years bring with it both challenges and opportunities. We are grateful for our accomplishments as we look forward to our continued success in serving the community and connecting donors to causes that matter.

We thank you for your dedication to this community and look forward to the journey ahead.

Sincerely yours,

Amy Folkes

Amy Folkes
President, Board of Directors



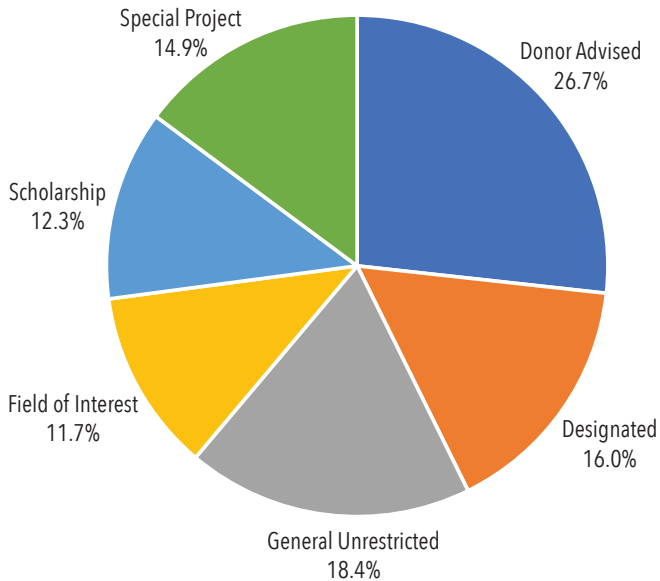
Richard E. H. Wentz
Chief Executive Officer



2022 FINANCIAL OVERVIEW

The Southeast Virginia Community Foundation holds itself to high standards of financial management and transparency, and operates efficiently for the interest of our community. Financial overview is for the year ending December 31, 2022.

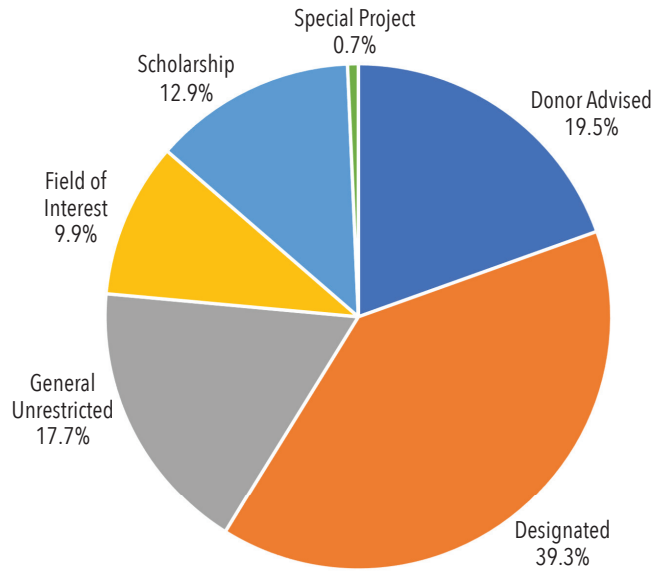
GRANTS BY FUND TYPE



Grants By Fund Type

Total Grants:	\$604,037
■ Donor Advised:	\$161,544
■ Designated:	\$96,407
■ General Unrestricted:	\$111,410
■ Field of Interest:	\$70,941
■ Scholarship:	\$74,150
■ Special Project:	\$89,585

FUND ASSETS BY TYPE



Fund Assets By Type

Total Assets:	\$15,321,672
■ Donor Advised:	\$2,991,646
■ Designated:	\$6,018,094
■ General Unrestricted:	\$2,704,558
■ Field of Interest:	\$1,519,833
■ Scholarship:	\$1,982,819
■ Special Project:	\$104,722

2022 FINANCIAL HIGHLIGHTS

total
NET
ASSETS

\$15,321,672

total
GRANTS
AWARDED

\$604,037

total
OF ALL
CONTRIBUTIONS

\$564,747

total
NUMBER
OF FUNDS

119

John Porter Wright Funds Will Help Charities and Spur Business Growth

John Porter Wright, who founded Waverton Associates, a highly respected multi-family construction and management company, died of pancreatic cancer in 2022. But his legacy lives on through a donor advised fund with SEVACF specifically designed to benefit hyper-local charities in the community. All donations made from this fund will be within the confines of the 757/Tidewater community.



“We have established an Education & Opportunities Trust, in the name of John’s parents, Mary Cameron Wright & Thomas Judson Wright III,” says his nephew, Cameron Robinett. “Monies from this trust can be used for higher education or as seed capital with an entrepreneurial spirit.” A committee of three family members will vet all submissions. “My uncle did not attend college but wished to honor his parents by supporting future generations,” says Cameron. “The fund will allow family descendants to carry on his spirit of generosity.”



A lifelong resident of Portsmouth, Wright served on the Boards of the Tidewater Builders Association and the Virginia Association of Home Builders. A founding member of Habitat for Humanity of South Hampton Roads, he was its president for four years and was among the first in the area to obtain the Master Builder Designation.

“John Wright cared deeply for his family and local community,” says Cameron Robinett. “With these creative funds, his generous spirit will remain with us.”

Pictured top left -- John Porter Wright and wife Denise. Pictured top right -- John with daughter Abby.
Pictured bottom -- John with son John A.

DONOR ADVISED FUNDS

Donor Advised Funds offer a meaningful opportunity to support the community and also grow your own funds. You can donate cash, stocks or non-publicly traded assets like private business interests, cryptocurrency and stock for an immediate tax deduction.

Smithfield Singers Hit the Road, Thanks to a SEVACF Managed Fund

For a small town high school chorus, performing in New York City can be life changing.

That's why Smithfield High School (SHS) Choral Director Katie West arranged for 22 students in her advanced choral group, the Choraliers, 16 Concert Chorus students, and 16 adult chaperones to go to the Big Apple this past May for a concert choral sing at the Cathedral of St. John the Divine. To pay for it, the SHS Choral Boosters Club partnered with SEVACF and its 501c3 status to establish a special project fund. They created posters with a QR Code so benefactors could contribute online. With this fund, supporters could easily make tax deductible



contributions to support the chorus, which also participated in a choral competition at Busch Gardens in early June.

“It means everything to me to give these young people opportunities like this,” says West. I care for them as I do my own children.” TowneBank was a major donor to the fund. “I was overwhelmed by the generosity from the community so that my students could have this experience.”

There are 132 students in the Smithfield choral program, none of whom were able to travel during COVID. Now, thanks

to the end of the pandemic and the SEVACF fund, these Isle of Wight County school singers are hitting the road again.

SPECIAL PROJECTS FUNDS

Special Projects Funds can be established through SEVACF, thanks to our 501c3 status, to allow benefactors to donate and earn a tax-deduction. This is a great way for a school or non-profit to raise money for causes dear to their hearts.

First Colonial Grad Who Died in 2021 Honored by His Family Through a SEVACF Scholarship Fund

*At the end of 2020, Shannon McGrevy says
“all I wanted for Christmas was for my teenage son
Conner to pick three colleges we could visit.”*



Pictured from left to right -- parents, Shannon and Michelle McGrevy,
with son Conner, Makenzi, and Mariah.

A free spirited junior at First Colonial High School in Virginia Beach, who was into adventure, fitness, friends, art and selflessness, Conner never provided the list. And he never made it to college either. On May 15, 2021, the 17-year-old son of Navy vet Shannon and wife Michelle died in a car accident in Dare County.

It's not clear to Shannon that Conner, who built a 1982 Jeep from the ground up and loved to weld,

paint and wire, was headed toward higher ed like his eldest sister Mariah. “His sister Makenzi is in the Coast Guard, and I think he was more likely to follow her into the military,” says his father, who is today a probation officer in Norfolk. “I could hear Conner in my head, saying, ‘Dad, you should do this job. You’ll be helping people’.”

(Continued on next page)

(Continued from previous page)



In Conner's memory, the McGreys, both from Massachusetts, are doing more than that. Working with SEVACE, they established an annual scholarship in their son's name for a First Colonial student, whether he or she is bound for a two- or four-year college or a vocational program.

Raising money for it is helping occupy the couple. "We had a fundraiser in May at Stability CrossFit where Michelle works called 'Lifting Students to Higher Education,' and it was very successful," says Shannon. "Conner's favorite lift was the Deadlift," says Michelle, "so in lifting the weights, we earned money for a graduating senior. He was a sweet boy, funny, wise beyond his years who just loved helping others."

Nothing will bring back their carefree Boy Scout, kickboxer and prankster, but other FC Patriot grads will be able to finance their education, thanks to the generosity and dedication of the parents of Conner Darren McGrey, loving son and brother to two older sisters, gone way too soon.



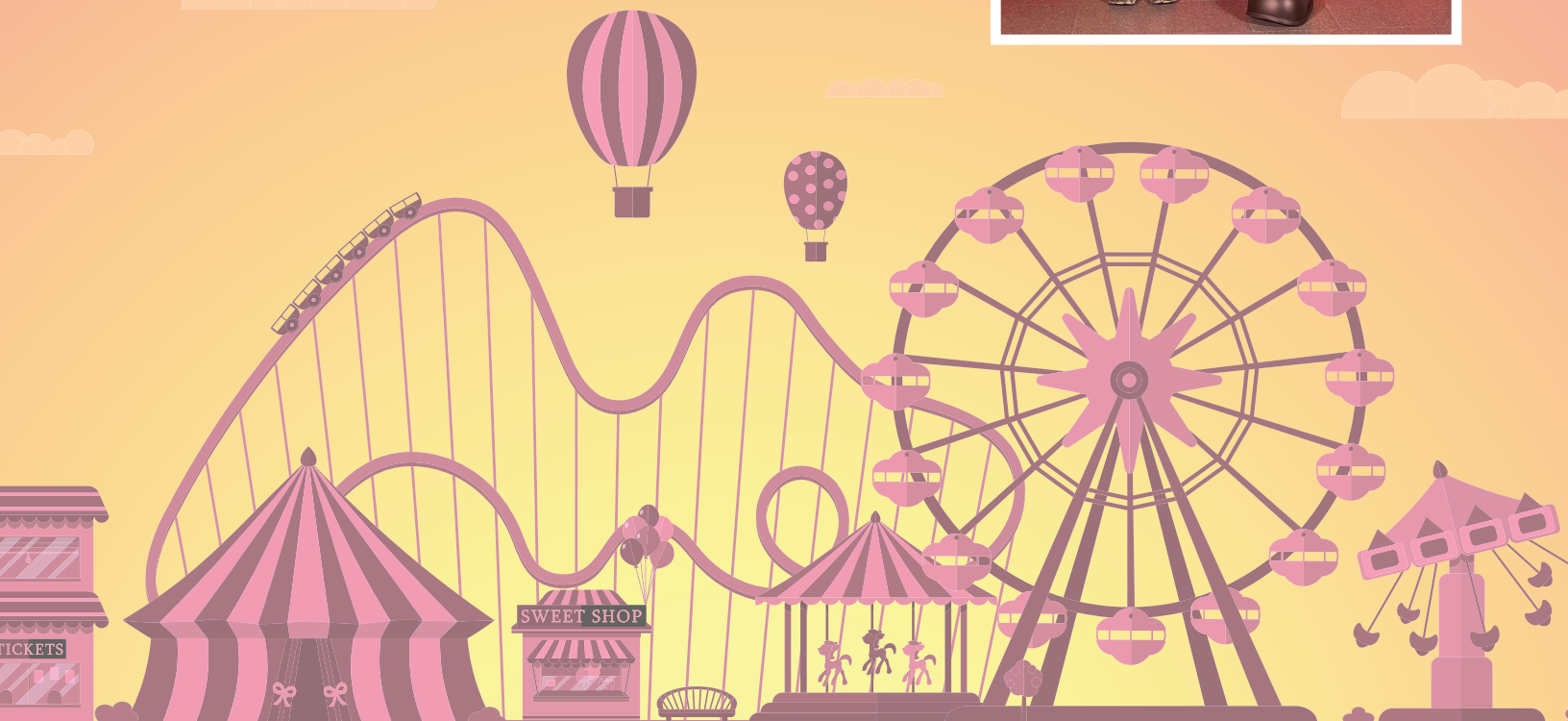
SCHOLARSHIP FUNDS

Scholarship Funds memorialize or honor an individual who has made a significant impact on your family or community. Their memory can live on through an educational scholarship that can help future generations of students and create a lasting legacy.

Make-A-Wish® Fall Grant \$10k

*Dreams really
do come true.*

A 7-year-old boy, seriously ill because of a genetic disorder, had his dream of visiting theme parks in Florida granted. Thanks to SEVACF's generous support and the allocated funds of \$10,000, Ryan Blanco and his family (13 participants in total), were able to enjoy a week-long vacation at the Florida theme parks, organized by Make-A-Wish Greater Virginia. Ryan's wish journey began with a sendoff party! This was organized and executed by our volunteers, whose responsibility is to celebrate the request coming to life, and gleefully wishing bon voyage to the family, about a week before departure. Ryan and his family were granted rental cars and set off for a two-day road trip from Virginia to Florida. Throughout the trip, Ryan was able to enjoy spending much needed quality time with his family members, including his beloved brother Shane who had recently been deployed.



2022

SCHOLARSHIP RECIPIENTS

This year, 40 deserving students are the recipients of \$74,650 in scholarships thanks to the Southeast Virginia Community Foundation and our fund holders.

Call our office at **757-397-5424** to get information about how to start a scholarship fund. Visit our website at <https://sevacf.org/scholarships/scholarship-offerings/> to apply for a scholarship.

AL TAYLOR MEMORIAL SCHOLARSHIP FUND

Julia Wenzel
Samantha O'Prandy

BARBARA HOWARD OTR MEMORIAL SCHOLARSHIP FUND

Coley Carpenter

C.H. JORDAN SCHOLARSHIP FUND

Alycia Henderson-Brown
Arianna Smith
Breanna Yoakum
Kayla Norman
Nazir Imhotep
Patrick King

C.S. SHERWOOD SCHOLARSHIP FUND

Alexander Moody
Allison Wilson
Amaid Ramos-Atencio
Asiyah Clifton
Bretia Green
Cameryn Pruitt
Curtney Vincent
Dionna Butts
Jreeme Thornton-Pretlow
Karli Murphy
Kasey Rogers
Luis Morales, IV
Makiya Brooks
Nathaniel Morrison
Zy'Kia Williams

CONNER MCGREY MEMORIAL SCHOLARSHIP FUND

Emilio Giron

EASTERN AMATEUR GOLF SCHOLARSHIP FUND

Zion Hill

FRANCES V.C. MAJOR MEMORIAL SCHOLARSHIP FUND

Kristiana Jones

IFPTE LOCAL#1 RALPH MCELFRESH SCHOLARSHIP FUND

Kyle Chang

JARROD B. SHIVERS MEMORIAL SCHOLARSHIP FUND

Brianna Marsh

JOSEF D. COLLINS MEMORIAL SCHOLARSHIP FUND

Imani Ferguson

KAREN MELLOTT COLSTON MEMORIAL SCHOLARSHIP FUND

Arianna Griffin
Jake Fulford

MASON HACKWORTH THEATRE SCHOLARSHIP FUND

Kenna Wadlington
Megan Neumann

MAYLEA BROCKINGTON BEASLEY LOVE & LAUGHTER SCHOLARSHIP FUND

Carly Lundgren
Veronica Armstrong

PORTSMOUTH SERVICE LEAGUE SCHOLARSHIP FUND

Grace Nichols

SUSAN BERRY REITELBACH SCHOLARSHIP FUND

Amaya Robinson

TYRONE HINES SCHOLARSHIP FUND

Zion Hill

W. CLAYTON ROBERTSON SCHOLARSHIP FUND

Thomas Patterson

2022 Grants Paid BY PROGRAM

The majority of our annual grant-making is directed by donors to the causes they care about. Additional grants are made possible through our **Community Needs Fund**, which was established by philanthropists who have entrusted the Foundation to identify and address critical issues and community needs. This year we awarded \$226,585 to 38 organizations. Congratulations to the awardees!

ARTS & CULTURE - \$20,000

- Mosaic Steel Orchestra, Inc.
- Portsmouth Community Concerts
- Virginia Symphony Orchestra
- Young Audiences of VA Inc. dba Arts for Learning VA

CAPITAL - \$18,000

- Partnership Development Foundation
- St. Mary's Home for Disabled Children

EDUCATION - \$46,375

- Chesapeake Public Schools Educational Fdn
- Communities In Schools of Hampton Roads
- Eastern Virginia Medical School
- Girl Scouts of the Colonial Coast
- Portsmouth Reads
- Starbase Victory
- Tidewater Friends of Foster Care
- Virginia Air & Space Center
- Wesley Community Service Center

HEALTH & HUMAN SERVICES - \$142,210

- Ability Center of Virginia
- American Red Cross of Coastal Virginia
- Benjamin Goldberg Foundation
- Complete the Puzzle
- FACT
- Fear 2 Freedom
- Foodbank of Southeastern VA & the Eastern Shore
- ForKids, Inc.
- Habitat for Humanity of South Hampton Roads
- Holiday House of Portsmouth, Inc.
- Horizons Hampton Roads, Inc.
- Joy Ministries
- Make-A-Wish Greater Virginia
- Neighborhood
- New Vision Youth Services, Inc.
- PIN Ministry
- Portsmouth Christian Outreach Ministries
- Roc Solid Foundation
- Rx Partnership
- Samaritan House
- Seton Youth Shelters
- Therapy on the Move
- Young Life Chesapeake

Applying FOR A GRANT

The Southeast Virginia Community Foundation improves communities by connecting people who care with causes large and small. Based on this mission, the Foundation's grant making program builds the capacity of organizations to address important issues and thrive. We welcome applications from nonprofit organizations throughout southeast Virginia.

We invite you to visit our website for detailed information on criteria and guidelines to apply for a grant.

Learn more: sevacf.org/grants

2022 Funds **BY TYPE**

DONOR ADVISED FUNDS

- Apurva and Vandana Patel Family Donor Advised Fund
- Cherry Family Donor Fund
- Child & Family Fund of Patrick & Karen Callahan
- Creecy Family Advised Fund
- Don, Susan & Kathleen Comer Donor Advised Fund
- Fleming Family Advised Fund
- Folkes Family Donor Advised Fund
- Griffin Family Advised Fund
- Hackworth Family Donor Advised Fund
- Hardee Family Donor Advised Fund
- Herbert K. & Carolyn K. Bangel Advised Fund
- John Burns Family Advised Fund
- John Porter Wright Family Donor Advised Fund
- Korving Family Donor Advised Fund
- Major M. Hillard Family Advised Fund
- Maurice Gunter Advised Fund
- Neal & Jean Davis Advised Fund
- Oast Family Donor Advised Fund
- Patterson-Bertrand Family Donor Advised Fund
- Paul & Carolyn Gottlieb Advised Fund
- Paul W. & Shirley K. Robinett Advised Fund
- Richard E. H. Wentz Family Donor Advised Fund
- Sims Donor Advised Fund
- STRIVE - The Tapp Family Foundation Fund
- U. Starr Oliver Donor Advised Fund
- Viola Family Donor Advised Fund
- W. Lewis & Judith W. Witt Donor Advised Fund
- Ward and Bruce Robinett Family Advised Fund
- Willard & Betty Moody Advised Fund
- William Collins Hill Memorial Fund
- Wood Family Advised Fund

COMMITTEE ADVISED FUNDS

- Randolph-Macon Lambda Chi Alpha Fraternity Corp. Fund

AGENCY ENDOWMENT FUNDS

- AAPI-HR Foundation Fund
- Annette Crandall Scholarship Fund
- Chesapeake Public Schools Educational Foundation Fund
- Chesapeake Sports Club Endowment Fund
- Children's Health Investment Program Endowment Fund
- E. Ann Stokes American Heritage Fund
- Elizabeth B. Watson Endowment Fund
- Elizabeth River Project Endowment Fund
- Friends of Chevra T'helim Fund

- Joy Ministries Endowment Fund
- Portsmouth Sports Foundation Fund
- South Norfolk Ruritan Club Endowment Fund
- USO of Hampton Rds and Central VA Restricted Endowment Fund
- YMCA of Portsmouth Endowment Fund

UNRESTRICTED FUNDS

- Arthur & Martha Cherry Fund
- Bernard Griffin, Sr. Memorial Endowment Fund
- Dick & Dona Wood Fund
- Dr. H. Dale Sponaugle Family Fund
- Eustis Unrestricted Fund
- Jacquie B. McCready Deans Fund
- Southeast VA Community Needs Fund
- Willie G. Wilson Estate Fund

FIELD OF INTEREST FUNDS

- Children with Special Needs Fund
- Chisholm House Fund
- Shuler Family Endowment
- South Norfolk Ruritan Club Robert G. "Buddy" Bagley Statue & War Memorial Fund
- 757 Lunch Money

DESIGNATED PURPOSE FUNDS

- AAPI-HR/TBF/SEVACF Designated Endowment Fund
- Chesapeake Sports Club/TBF/SEVACF Designated Endowment Fund
- Christopher Academy/TBF/SEVACF Designated Endowment Fund
- Collins Project Fund
- CPSEF/SEVACF/TBF Designated Endowment
- EDMARC Hospice for Children Endowment Fund
- Elizabeth River Project/TBF/SEVACF Designated Endowment Fund
- First Citizen Designated Fund
- Fort Nelson Chapter Nat'l Society DAR/TBF/SEVACF Designated Endowment
- Fort Nelson Chapter of the NSDAR Fund
- Foskey-VanDyck Memorial Fund
- Heritage Fund
- John & Barbara Hill Designated Fund
- Joy Ministries/SEVACF/TBF Designated Endowment
- Lee & Helen Gifford Fund
- Medical Transport Assistance Endowment Fund
- Merrimac Kiwanis Legacy Fund
- Neal & Jean Davis Family Fund
- Operating Fund
- Operating Reserves Fund

- PIT Foundation Designated Fund
- Portsmouth Cedar Grove Cemetery Fund
- Portsmouth Public Library/TBF/SEVACF Designated Endowment Fund
- Portsmouth Service League Endowment Fund
- Portsmouth Sports Fdn/SEVACF/TBF Designated Endowment Fund
- Schwetz Library Fund
- South Norfolk Ruritan Club/TBF/SEVACF Designated Endowment
- St. John's/ London House Fund
- Tidewater Youth Golf Association Fund
- Trinity/ London House Fund
- YMCA of Portsmouth/SEVACF/TBF Designated Endowment

SCHOLARSHIP FUNDS

- Al Taylor Memorial Scholarship
- Armed Forces Scholarship
- Barbara Howard OTR Memorial Scholarship
- Bradley Coles Memorial Scholarship
- C.H. Jordan Scholarship
- C.S. Sherwood Scholarship
- Conner McGrevy Memorial Scholarship
- Eastern Amateur Golf Scholarship
- Foskey-VanDyck Scholarship
- Frances V.C. Major Memorial Scholarship
- George F. Bogdan Scholarship
- Gladys Clarke Memorial Scholarship
- Horace Savage Scholarship
- IFPTE Local #1 Ralph McElfresh Scholarship
- Jack Matheson Memorial Scholarship
- Jarrod B. Shivers Memorial Scholarship
- Josef D. Collins Memorial Scholarship
- Karen Mellott Colston Memorial Scholarship
- Mason Hackworth Theatre Scholarship
- Maurice Gunter Scholarship
- Maylea Brockington Beasley Love/Laughter Scholarship
- Portsmouth Service League Scholarship
- Rachel M. Leister Scholarship
- Susan Berry Reitelbach Scholarship
- Tyrone Hines Scholarship
- W. Clayton Robertson Memorial Scholarship

SPECIAL PROJECT FUNDS

- Chesapeake 50, Inc. T/A Chesapeake Charities
- Crush Cancer (Cycle for Survival)
- Faith United Fund
- North Suffolk Rotary Club Special Project Fund
- Serve the City of Chesapeake Special Project Fund



To learn more about how to get started,
contact us at 757-397-5424.

The Southeast Virginia Community Foundation exists to serve our donors and make your charitable giving more meaningful. When you choose to work with us for your philanthropy, you join a group of dedicated, like-minded individuals, families, and businesses united by a passion for making a difference in their community.

Every gift, regardless of the amount, is an investment to build stronger, healthier communities. We invite you to visit our website at <https://sevacf.org/give/> for detailed information on each of our giving vehicles and how to start a fund.

2022 DONOR CONTRIBUTIONS

GIFTS \$100,000 +

- John Burns
- Starr & Michael Oliver

GIFTS \$50,000 - \$99,999

- P. Marshall and Kathy Fleming
- AAPI of Hampton Roads, Inc
- Stephen and Lauren Clarke

GIFTS \$25,000 - \$49,999

- Willie G. Wilson Estate
- W. Lewis and Judith W. Witt
- TowneBank

GIFTS \$10,000 - \$24,999

- Georgia T. Flournoy Unitrust #3
- Estate of Paul Ward Robinett, Sr.
- North Suffolk Rotary Club
- Carl and Teresa Hardee
- Champions For Charity
- Gordon E. and Donna Saffold
- Rudolf Construction Partners, LLC

GIFTS \$5,000 - \$9,999

- Charlie and Dorothy Hackworth
- Otha & Bertha Wright
- Larry and Chrystal Hill
- AHP Development, LLC
- ESG Enterprises Inc.
- Harvey Lindsay, Jr.
- Lawrence W. /Anson, Jr.
- McLeskey & Associates, LLC
- PHR/GKR Holding Co.
- Richard E. H. Wentz
- S. B. Ballard Construction Company
- Sara Taylor
- Stephen and Meghan Korving
- The Franklin Johnston Group

GIFTS \$1,000 - \$4,999

- Hampton Roads Community Foundation
- Nancy W. Matheson
- TowneBank Chesapeake
- Carolyn Bernard
- Divaris Real Estate
- Ellis Gibson Development Group
- MEB Inc.
- Russell Family Fund
- Smithfield High School Choral Boosters
- Turner Strategic Technologies, LLC
- Venture Realty Group
- VOA Mgmt Co
- John and Shari Beasley
- William H. Oast, III
- Beverly Pierce
- Charles Hackworth II

- Hackworth Reprographics
- The Graphics Shop
- Wasserhund Brewery Company
- ALCO, Inc.
- Burl Yates
- David McGrevy
- Dennis and Margaret Gartman
- Emily Robbins
- Irontrax
- Randolph Windley
- Velocity Construction
- Enterprise Holdings Foundation
- Hall Automotive
- J. Michael Reitelbach
- Kiwanis Club of Chesapeake
- John Barnes
- Womeldorf Charitable Gift Fund

GIFTS \$500 - \$999

- April Parker
- Von L. and Christine Piersall
- Kevin Barney
- Velverlee Brown Parrish
- Graham Covington
- Shannon and Michelle McGrevy
- Jennette Yates
- Baylake United Methodist Church Endowment Fund
- Best Life Physical Therapy & Sports Medicine
- Commonwealth Properties, LLC
- Jason Dodd
- Marcus and Lauren Hill
- Mr. and Mrs. Lex
- Virginia and David Ware DAF

GIFTS \$100 - \$499

- Sara Shannon
- David and Mary Beth Hackworth
- Doug Worrall
- John E. Parrish
- TowneBank Branch
- Marianne Haugh
- Beach Ford
- Ms. Dangler
- Trish Miller
- W. Carroll and Gloria Creecy
- Angela Cappello
- Anna Koufos
- Brian and Carolyn Bartin
- United Way of South Hampton Roads
- Harbor Construction Company, Inc.
- Pleasants Commonwealth Transportation
- Lewis J. Georges
- Marvin Owens

- Melissa Thrasher West
- Ron and Shannon Clark
- Ron Kopplow
- Stephen Celuck
- TerraForge Communities, Inc.
- TriPower Cycling Club
- Art Latimer
- Channing Pfeiffer
- Joshua Pretlow, Jr.
- Justin Sorensen
- Margaret Little
- Nindra Foundation
- Southeast Virginia Community Foundation
- Suffolk Materials LLC
- Christina Fogelsanger
- Carrie Reid
- Kathie Carter
- Greg Battaglia
- Howard & Sandra Gordon
- Meghan Stufflebeem
- Raymond and Debra Gromelski
- Tyrone C Watson
- Backswing Golf Events
- Annie Showalter
- Cecilia Heck
- Rycon Construction, Inc.
- Don & Susan Comer
- Windy Crutchfield
- Angie Stokes
- Redell Brown
- Samuel Harris
- Adam Reitelbach
- Amber Templeton
- Benjamin Crumpler
- Bill Porter
- Bradford L. Cherry
- Bronwyn Humphrey
- Carole Ferro
- Danny Torbett
- David Laurell
- David Shiveley
- Diane Benton Snellinger
- Elissa Pierson
- Frank and Roberta Cool
- Harry Cross
- Jim and Bree Mueller
- John C. Ellis, Jr.
- Joshua Pretlow
- Kempis & Pam Brown
- Laura Frasco
- Lloyd Dossey
- Lydia Patton
- Marcus Valdez
- Mark Zimmerman
- Mrs. Mulveyhill
- Nancy Modlin
- Patrick Maloy
- Paul Gottlieb
- Randy Raddish
- Regina Glaser
- Rob Buchanan
- Robin Boyd
- Scott Miller

- Seamus McNamee
- Steven Koczera
- Suzanne Turnau Waxman
- Tara Pearne
- Tessa and Steve Davis
- Theresa Hartner
- Tracy Hardee

GIFTS UNDER \$100

- Ben Willis
- Tracy Vertelka
- Rajesh Sriraman
- Sara Reed
- Anthony Karanikas
- Rene Williams
- Terence Walke
- Allison Thomas
- Amy Lassen
- Anita Matteson
- Anonymous
- Barry and Cecilia Hess
- Brenda Grizzard
- Brian Horn
- Brie Nelson
- Cheryl Pasquareelo
- Chuck Brothers
- Claudette McKinney
- Dr. Shah
- Elizabeth Peachey
- Gail Donais
- Gladys Hall
- Grigsby Scifres
- Jaclyn Igelman
- Jennifer Lynch
- Joe and Noel Ussery
- Kaitlyn Sugden
- Kayla Wulf
- Leann Day
- Mary Black
- Melanie McPherson
- Melissa Westerfeld
- Michelle Taylor
- Mr. and Mrs. Sims
- Mrs. Lichty
- Mrs. Sondej
- Nelson Slade
- Tara and William Smith
- Thomas and Anne McMillan
- Todd Savage
- William Wethington
- Amazon Smile
- Andrea Tanner
- Kroger Stores
- Nicole Olejarz
- Cynthia Flores
- Laaree Peoples
- Ricky Castillo
- Calli Langlois
- Marion Smith
- Mary-Beth Carney
- Mr. and Mrs. Beshartati
- Raymond Montani
- Virginia Parrish
- William & Sharon Nusbaum
- Barbara Silver

- Jason Lamb
- Lisa Raby
- Nakul Kumar Mukka
- Paula Berenson
- Shirley Porter
- Tari Hackworth
- Ashley Bonnington
- Donna Frangione
- Katie Olson
- Richard Cardon
- Tammy Campbell
- Theresa L Bedard
- Joseph Edwards

THANK YOU
to all of our
2022 Donors
for your
generous support

About THE SOUTHEAST VIRGINIA COMMUNITY FOUNDATION

THE SOUTHEAST VIRGINIA COMMUNITY FOUNDATION is a nonprofit community corporation that connects people who care with causes large and small to benefit the communities we serve. Founded in 1965, SEVACF helps donors meet local charitable needs in Chesapeake, Portsmouth, and the greater southeast Virginia region by targeting grants and scholarships toward our community's most pressing needs and promising opportunities.

SEVACF manages a collection of undesignated charitable funds, grant-making funds, nonprofit endowments, and scholarship funds, created by different donors at different times for varying purposes. Donors may create funds during their lifetime or by bequest, for general charitable purposes or for a particular cause or organization that they specify. SEVACF provides tailored services to help individuals, families, businesses, and other groups pursue their charitable goals easily, effectively, and with maximum tax benefit.

Through our two competitive grant cycles each year, SEVACF supports southeast Virginia's most exciting and urgent charitable projects. We serve as a catalyst, leading collaborative solutions to key community issues as they arise.

SEVACF also manages designated endowments on behalf of nonprofits through The Match program, providing these groups with sustainable, easy funds for whatever their needs may be while promoting financial stability.

Through our scholarship program, SEVACF has helped many local students pursue their dream of a college education. We have awarded both need-based and merit-based scholarships to the future leaders of our country.

SEVACF's perpetual endowments are a resource for today and tomorrow. With the Southeast Virginia Community Foundation, people who love southeast Virginia can give back to the community to meet today's pressing needs, while building a source of support for future generations.

Believing that community is more than about geographic locale, each of SEVACF's programs share, by design, common values. Our overriding goal is to develop a vision, shared by all, of building a sense of community for today, tomorrow and forever.

2022 FOUNDATION MEMBERSHIPS AND CERTIFICATIONS



Excellence. Accountability. Impact.

The Southeast Virginia Community Foundation meets National Standards for operational quality, donor service and accountability in our sector. This certification assures the utmost transparency, donor accountability, fundraising, grantmaking and financial practices.



The Southeast Virginia Community Foundation is an active member of the Council on Foundations, an association of more than 2,100 grantmaking organizations and corporations.



The Southeast Virginia Community Foundation is an active member of the Southeastern Council of Foundations, one of the nation's largest regional associations of grantmakers, serving more than 330 grantmaking foundations and corporations in the South.

1435 CROSSWAYS BLVD, SUITE 303 | CHESAPEAKE, VA 23320 | OFFICE: 757-397-5424 | FAX: 757-397-7948

WWW.SEVACF.ORG